

HWYLIO HEB DEITHWYR CUDD

RHESTR WIRIO BIODDIOGELWCH AR GYFER YMWELWYR YNYSOEDD

Gall llygod, llygod mawr ac ysglyfaethwyr arall gyrraedd ein hynysoedd drwy deithio'n gudd, gelwir hyn yn achosion o ymledu. Mae ysglyfaethwyr ymledol yn ddinistrio nythfeydd adar môr yn gyflym trwy fwyta wyau, cywion ac adar aeddfed.

Yn y DU ers 2018 yn unig cafwyd dros 40 achosion o ymledu eu riportio ar ynysoedd a ddynodwyd yn Ardaloedd Gwarchodaeth Arbennig ar gyfer adar môr. Helpwch i atal yr un nesaf trwy gynnal y gwiriadau syml hyn:

CHWILIWCH EICH BAGIAU

Chwilich eich holl bagiau, bocsys a cit am arwyddion o teithwyr cudd, gan gynnwys marciau cnoi a thyllau, baw, defnydd nythu. Sicrhewch fod yr holl bagiau a bocsys wedi'i gau'n dynn ac nad oes unrhyw dyllau.

CADWCH BWYD A SBWRIEL MEWN CYNWYSYDD GWRTH-LYGOD

Paciwch eich holl fwyd a wastraff mewn cynwysyddion wedi'u selio. Dewch â'ch sbwriel yn ôl gyda chi a chael wared arno'n briodol.

BYDDWCH YN WYLIADWRUS

Gwiriwch eitemau risg uchel fel bwyd, eitemau swmpus yn drylwyr.

Cadwch lygad ar eich bagiau/bwyd/cit a pheidiwch â'u gadael heb neb i ofalu amdanynt ar ochr y cei.

GOLCHWCH EICH ESGIDIAU

Lleihau'r risg o ledaenu clefydau a hadau planhigion anfredorol trwy olchi ac sychu eich esgidiau rhwng teithiau.

CHWILIWCH EICH CAIAC

Chwilich eich caiac am arwyddion o teithwyr cudd, gan gynnwys marciau cnoi a thyllau, baw, defnydd nythu. Siaradwch i berchnogion/rheolwyr ynysoedd cyn teithio. Osgoi tarfu ar adar sy'n nythu a bywyd gwyllt arall trwy dilyn y cod bywyd gwyllt morol Gwiriw, Glanhau, Sychu rhwng teithiau.

CYSYLLTWCH Â
BIODDIOGELWCH I
CYMRU I DREFNU
GWIRIAD GAN CI
CANFOD
CADWRAETH AR
GYFER CARGO
RISG UCHEL.



OS GWELWCH DEITHWYR CUDD AR CWCH:

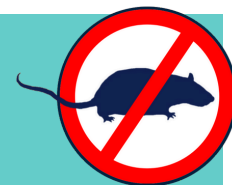
- PEIDIWCH Â GLANIO AR YNYS SY'N RHYDD O LYGOD MAWR
- PEIDIWCH Â'I WTHIO MEWN I'R DWR MAE LLAWER O FAMALIAID YN NOFWYR CRYF.

WEDI GWELD YSGLYFAETHWR YMLEDOL ANFRODOROL AR YR YNYS? RIPORTIWCH AR UNWAITH I AELOD O STAFF NEU DILYNWCH Y COD QR HWN I'N GWEFAN.



SAIL WITHOUT STOWAWAYS

BIOSECURITY CHECKLIST FOR ISLAND VISITORS



Rats, mice, mink & other mammalian predators reach islands as stowaways, this is referred to as a biosecurity incursion. These non-native invasive predators can quickly decimate breeding seabird colonies by eating eggs, chicks & adult birds.

Over 40 biosecurity incursions were reported on islands designated as Special Protection Areas (SPA) for breeding seabirds around the UK since 2018 alone. Help prevent the next one by carrying out these simple checks:

CHECK YOUR BAGGAGE

Check all bags, boxes and kit for signs of stowaways, including chew marks and holes, droppings, nest material. Ensure all bags are closed and have no holes, ensure boxes are all closed and sealed with no holes.

PACK FOOD AND WASTE IN MOUSE-PROOF CONTAINERS

Keep all food and waste in sealed containers. Rubbish should be returned to mainland & disposed of responsibly.

BE VIGILANT

Thoroughly check high risk cargo such as food & bulky items. Keep an eye on your bags/food/kit and avoid leaving them unattended on the quayside.

WASH YOUR BOOTS

Reduce the risk of spreading disease and non-native plant seeds by washing and air drying your boots between trips.

CHECK YOUR KAYAK

Check your kayak for signs of stowaways, including chew marks and holes, droppings, nest material. Speak to island owners / managers before travelling. Avoid causing disturbance to nesting birds and other wildlife by following the Marine Wildlife Code.

Check, Clean, Dry between trips.

CONTACT
BIOSECURITY FOR
WALES TO
ARRANGE A
CONSERVATION
DETECTION DOG
CHECK FOR HIGH
RISK CARGO.



IF YOU SEE A STOWAWAY ABOARD:

- DO NOT LAND ON A RAT-FREE ISLAND
 - DO NOT PUSH IT OVERBOARD
- MANY MAMMALS ARE STRONG SWIMMERS.

IF YOU NOTICE A NON-NATIVE INVASIVE PREDATOR ON THE ISLAND REPORT IMMEDIATELY TO A MEMBER OF STAFF OR FOLLOW THIS QR CODE TO OUR WEBSITE.



BIODDIOGELWCH I GYMRU
BIOSECURITY FOR WALES

Biosecurityforlife.org.uk
@BiosecurityLife



Mewn Partneriaeth â
Llywodraeth Cymru
In Partnership with
Welsh Government