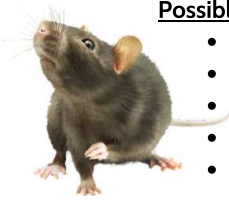


# Rat and mouse: intensive surveillance

Intensive surveillance: Responding to possible signs of rats or mice

**Possible signs include:**

- Finding one or more dead birds showing possible signs of predation
- Unclear or degraded footprints or droppings
- Sightings made by people unfamiliar with rodents or unclear sightings made by people who are familiar with rodents
- Bulky high-risk cargoes being brought to the island, such as building materials.
- Storm debris washing ashore on the island.



## Follow these 10 steps

	Action
1	<ul style="list-style-type: none"> <li>• Contact your relevant decision makers to inform them of the intensive surveillance required.</li> <li>• Contact the 'Biosecurity for LIFE' team, for guidance and support. Head to 'Need expert advice?' section on the website. <b>The team are here to help.</b></li> </ul>
2	<ul style="list-style-type: none"> <li>• Deploy a surveillance grid 250m in all directions from location of sighting with surveillance stations every 50m (wax blocks and tracking tunnels) which is approx. 100 surveillance points.</li> </ul>
3	<ul style="list-style-type: none"> <li>• Increase surveillance in areas likely to be utilised by invading animals (buildings and seabird colonies). Refresh existing surveillance stations to ensure the smell of the attractant e.g. chocolate wax is fresh and strong or ink in tracking tunnels is fresh.</li> </ul>
4	<ul style="list-style-type: none"> <li>• Carry out visual searches for rat or mouse sign, such as droppings, feeding sign, footprints etc. Freeze any fresh droppings found for DNA testing.</li> </ul>
5	<ul style="list-style-type: none"> <li>• Check surveillance tools as frequently as possible (<b>ideally daily for the first week, every few days for the next three weeks</b>) for a total of four weeks.</li> </ul>
6	<ul style="list-style-type: none"> <li>• Use trail cameras (5) to look for evidence of rodents moving at night</li> </ul>
7	<ul style="list-style-type: none"> <li>• Check of island by conservation dog. Get in touch with the 'Biosecurity for LIFE team'.</li> </ul>
8	<ul style="list-style-type: none"> <li>• <b>If probable or definite sign is found move to incursion response.</b></li> </ul>
9	<ul style="list-style-type: none"> <li>• If no further sign is found return to normal levels of surveillance after <b>4 weeks</b>.</li> </ul>
10	<ul style="list-style-type: none"> <li>• Enter trap and monitoring check data into a suitable database (an Excel file is fine) on the day it is gathered.</li> </ul>

## Equipment

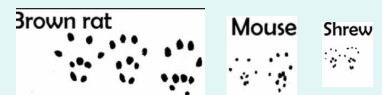
- Trail cameras and visual searches will be very important.
- For footprint tracking tunnel equipment, [Gotcha tracking tunnels](#) are recommended
- For flavoured wax blocks, [see the 'Recipe for making flavoured wax blocks' resource](#).
- As you are placing 100 surveillance stations out, wax blocks can be placed on pieces of wire out in the open to reduce costs and labour.
- To reduce non-target species nibbling the wax (it is not toxic so will not harm them, but bird or insect nibbles interfere with your ability to detect rodent gnaw marks) use as many bait stations (*Protecta* stations) as you can to house these wax blocks. Also if there are livestock in the area, use of stations will prevent trampling the wax blocks.

Item
Laminated sheets showing rodent sign (including identifying species by teeth marks left on wax blocks).
Map of island with routine surveillance etc.
Notebooks, pens, pencils etc.
Flavoured wax blocks
Wires for pegging wax blocks.
Bait stations (e.g. <i>Protecta</i> or pipe) to house wax blocks.
Tracking tunnels, ink pads and ink
Trail cameras
Large clear plastic boxes for storing reference and detection kit

Footprint ink tracking tunnel pack [Gotcha tracking tunnel](#)



Idea of size and form for footprints of rat, mouse and shrew (often native shrews).

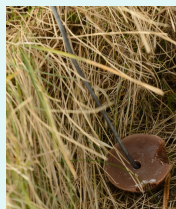


Far left: Closed Bait station (e.g. *Protecta* station) which can house flavoured wax blocks (away from birds, insects etc)

Left: Chocolate wax block inside *Protecta* station

Middle: Chocolate wax block on a piece of wire in the open.

Right: Rodent teeth marks on a chocolate wax block.



The Biosecurity for LIFE team can support you. Head to the 'Need expert guidance?' section of the website [biosecurityforlife.org.uk](http://biosecurityforlife.org.uk) Thank you.